



800D SERIES MIXER AMPLIFIER

A-848D(3CU)

■DESCRIPTION

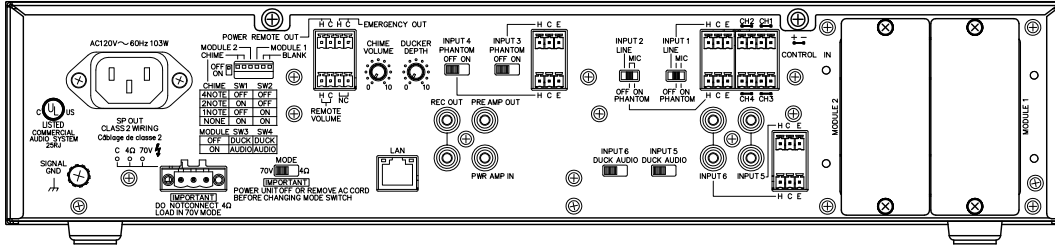
TOA's 800D Series mixer amplifier is a PA amplifier equipped with 4 microphone inputs, 2 auxiliary inputs, and 2 slots dedicated to the 900 Series modules. It employs a PFC circuit. It also features the following functions: Volume control function, Priority function, Chime function, and Remote confirmation function. In addition, it is equipped with a 2-channel input BUS of AUDIO and DUCK, and the signal processing function. The 800D Series mixer amplifier is ideal for paging announcement and BGM applications in schools, offices, and super markets.

■SPECIFICATIONS

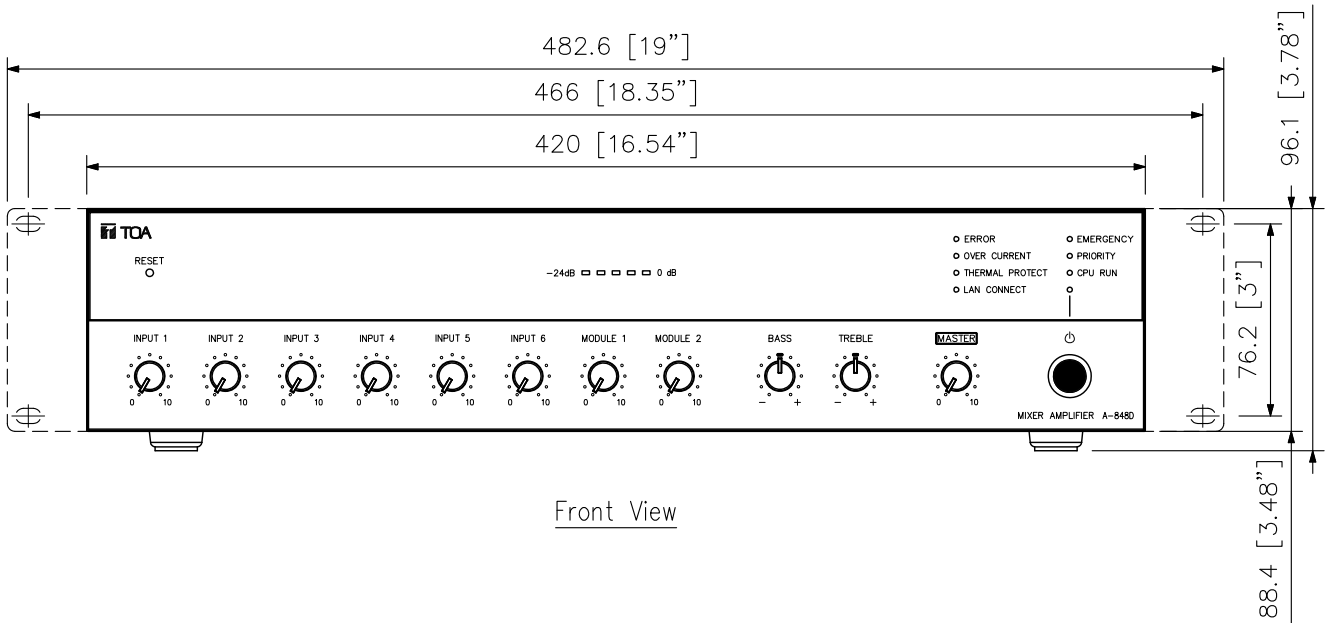
Power Source	120 V AC, 60 Hz
Rated Output	480 W
Power/Current Consumption	621 W (rated output), 103 W (based on UL62368), 200 mA or less (when power switch is OFF)
Frequency Response	50 Hz – 20 kHz ± 3 dB (1/8 rated output)
Distortion	1 % or less at 1 kHz, rated power (20 kHz LPF (AUX-0025))
Tone Control	Bass: ± 10 dB at 100 Hz Treble: ± 10 dB at 10 kHz
Signal to Noise Ratio	88 dB or more (Master volume: min) 76 dB or more (Master volume: max) 55 dB or more (INPUT 1 – 6) (A-weighted)
Audio Input	INPUT 1, 2: -60 dB (*1) (MIC)/ -20 dB (*1) (LINE) selectable, 600 Ω , electronically-balanced, removable terminal block (3 pins) Note: MIC inputs are equipped with phantom power (24 V DC, ON/OFF switchable). INPUT 3, 4: -60 dB (*1), 600 Ω , electronically-balanced, removable terminal block (3 pins) Note: Equipped with phantom power (24 V DC, ON/OFF switchable). INPUT 5, 6: MIC/LINE selectable MIC: -60 dB (*1), 600 Ω , electronically-balanced, removable terminal block (3 pins) LINE: -20 dB (*1), 10 k Ω , unbalanced, RCA pin jack $\times 2$ MODULE 1, 2: -20 dB (*1), 10 k Ω PWR AMP IN: 0 dB (*1), 600 Ω , unbalanced, RCA pin jack (An equalizer or other signal processor connectable between PRE AMP OUT and PWR AMP IN terminals)
Input Bus	INPUT 1 – 4: AUDIO INPUT 5, 6: AUDIO/DUCK selectable MODULE 1, 2: AUDIO/DUCK selectable
Audio Output	SPEAKER OUT: High impedance (70 V line/10 Ω)/Low impedance (4 – 16 Ω) selectable, removable terminal block (3 pins) REC OUT: 0 dB (*1), 600 Ω , unbalanced, RCA pin jack $\times 2$ PRE AMP OUT: 0 dB (*1), 600 Ω , unbalanced, RCA pin jack
Control Input	4 channels, no-voltage make contact input, open voltage: 35 V DC or less, short-circuit current: 10 mA or less, removable terminal block (4 pins) REMOTE VOLUME: Removable terminal block (4 pins)
Control Output	POWER REMOTE: Open collector output, withstand voltage: 30 V DC or less, control current: 25 mA or less, removable terminal block (4 pins) EMERGENCY OUT: Open collector output, withstand voltage: 30 V DC or less, control current: 25 mA or less, removable terminal block (4 pins)
Chime	1-note, 2-note, or ascending 4-note chime, or None selectable with switch setting
Indicators	5-point LED output level meter, Power indicator LED, LAN Connect indicator LED, Priority indicator LED, Emergency indicator LED, Thermal protection indicator LED, Over current protection indicator LED, CPU RUN indicator LED, Error indicator LED
Operating Temperature	-10 $^{\circ}$ C to $+40$ $^{\circ}$ C (14 $^{\circ}$ F to 104 $^{\circ}$ F)
Operating Humidity	85 %RH or less (no condensation)
Finish	Panel: ABS resin, black Case: Surface-treated steel plate, black, paint
Dimensions	420 (W) \times 96.1 (H) \times 313.1 (D) mm (16.54" \times 3.78" \times 12.33")
Weight	5.4 kg (11.9 lb)
Accessory	Power cord (2 m (6.56 ft)) $\times 1$, Audio input removable terminal plug (3.81 mm, 3 pins) $\times 6$, Control input removable terminal plug (3.81 mm, 4 pins) $\times 2$, Remote control removable terminal plug (3.5 mm, 4 pins) $\times 2$, Speaker out removable terminal plug (5 mm, 3 pins) $\times 1$, Volume control cover $\times 4$, Rack mounting bracket $\times 2$, Binding head screw M4 $\times 4$, Flat washer $\times 4$
Option	Input transformer: IT-450 Perforated panel: PF-013B

(*1) 0 dB = 1 V

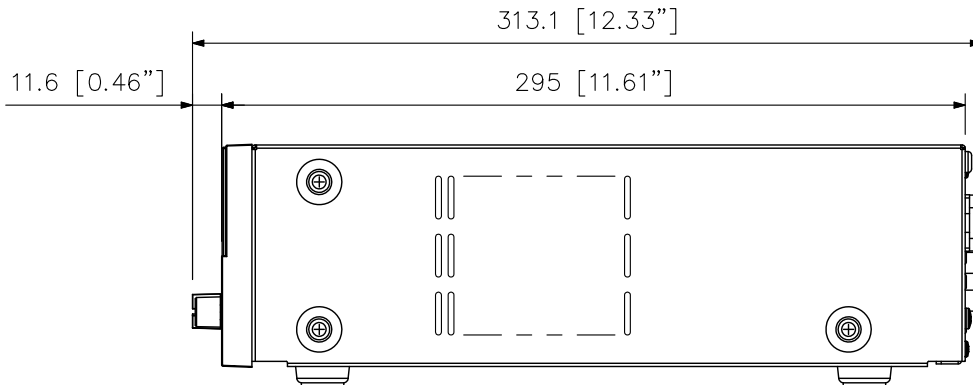
■ APPEARANCE



Rear View



Front View



Side View

UNIT:mm SCALE:1/3